




**GMS\***  
GRAPHIQUE MEDIASOLUTIONS

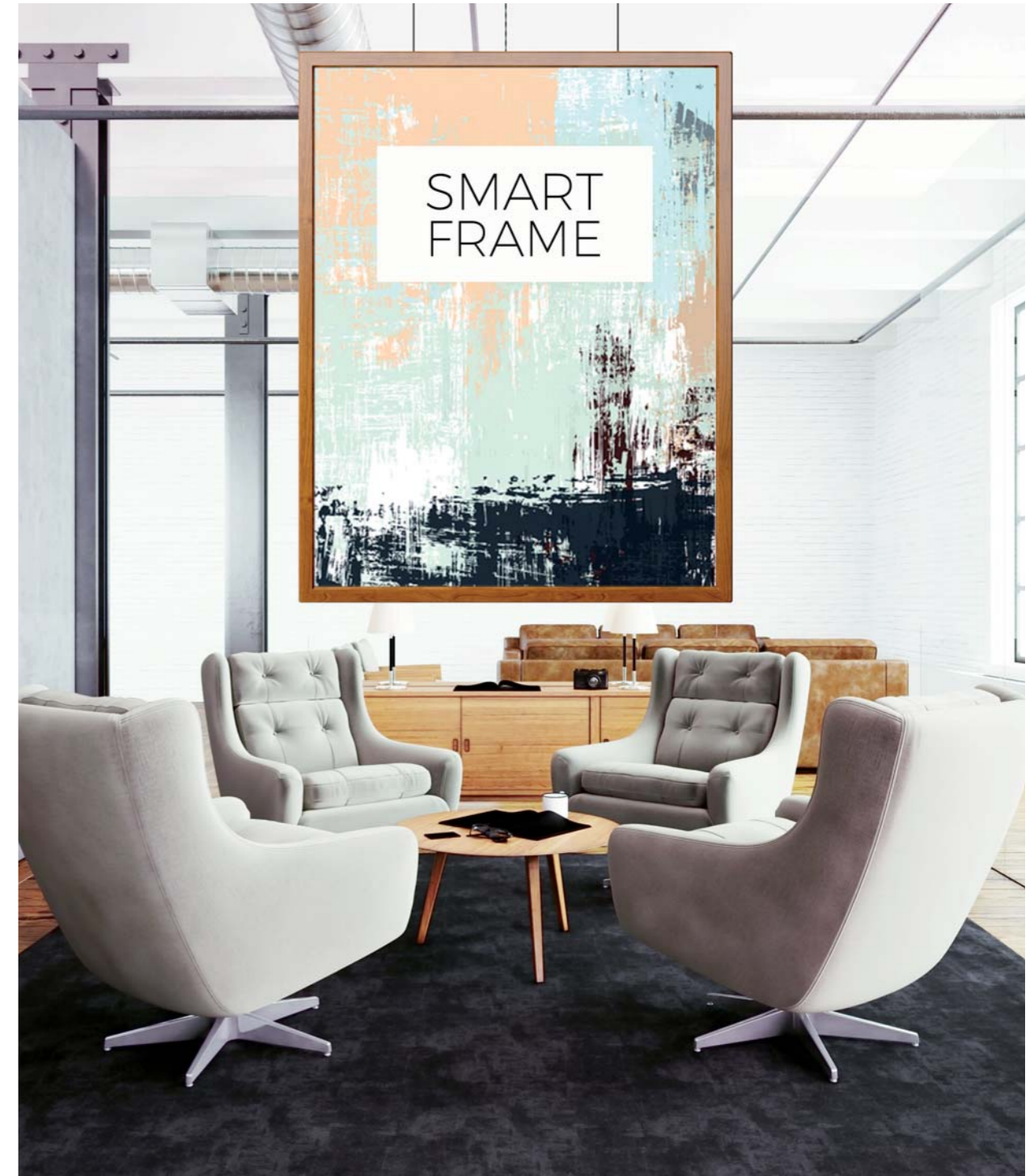
## List of models:

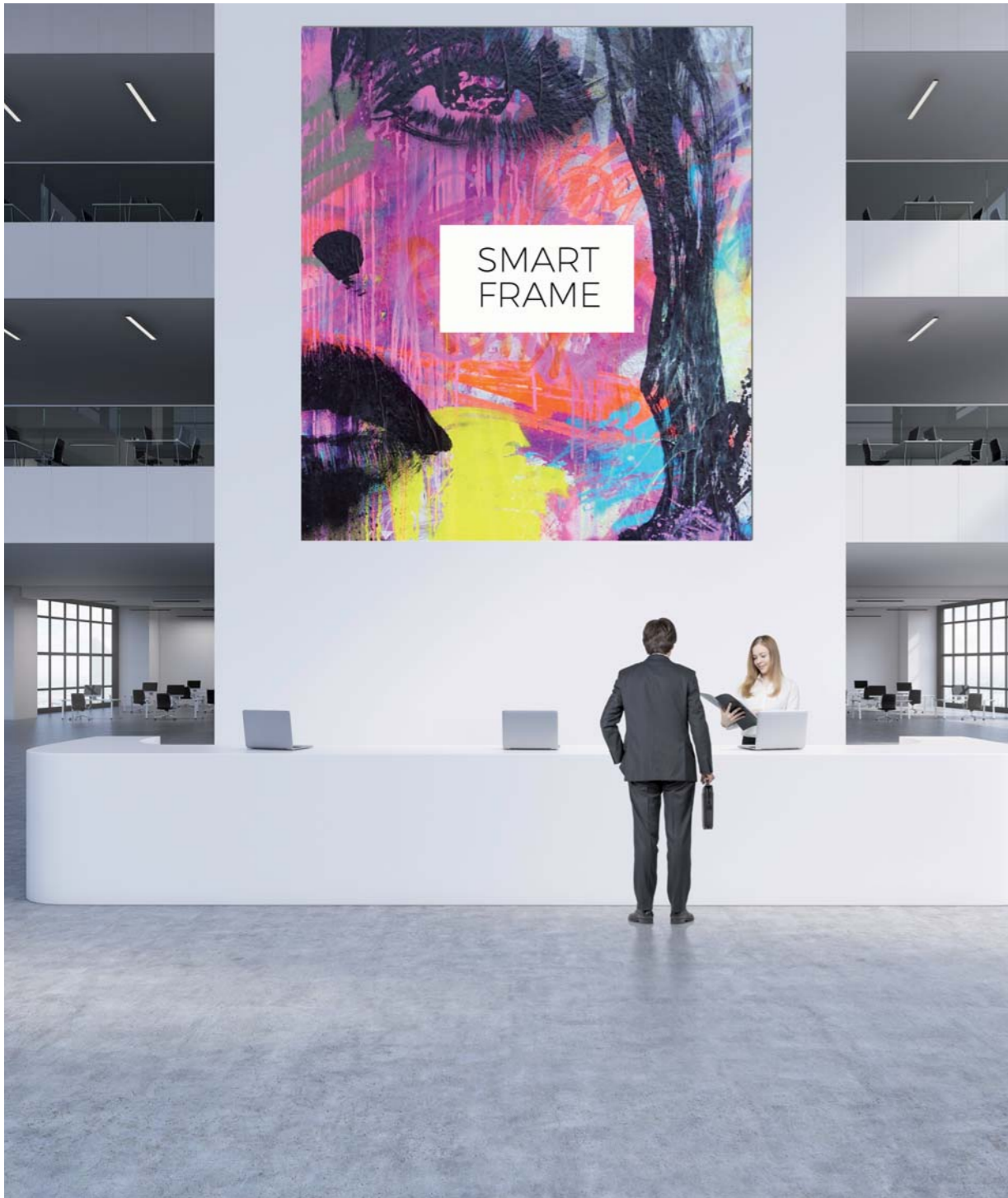
model:	pages:
S18	16
S25	22
S50D	26
S50T	30
S100	36
FBox	40
F80	44
F120	50
F160	54

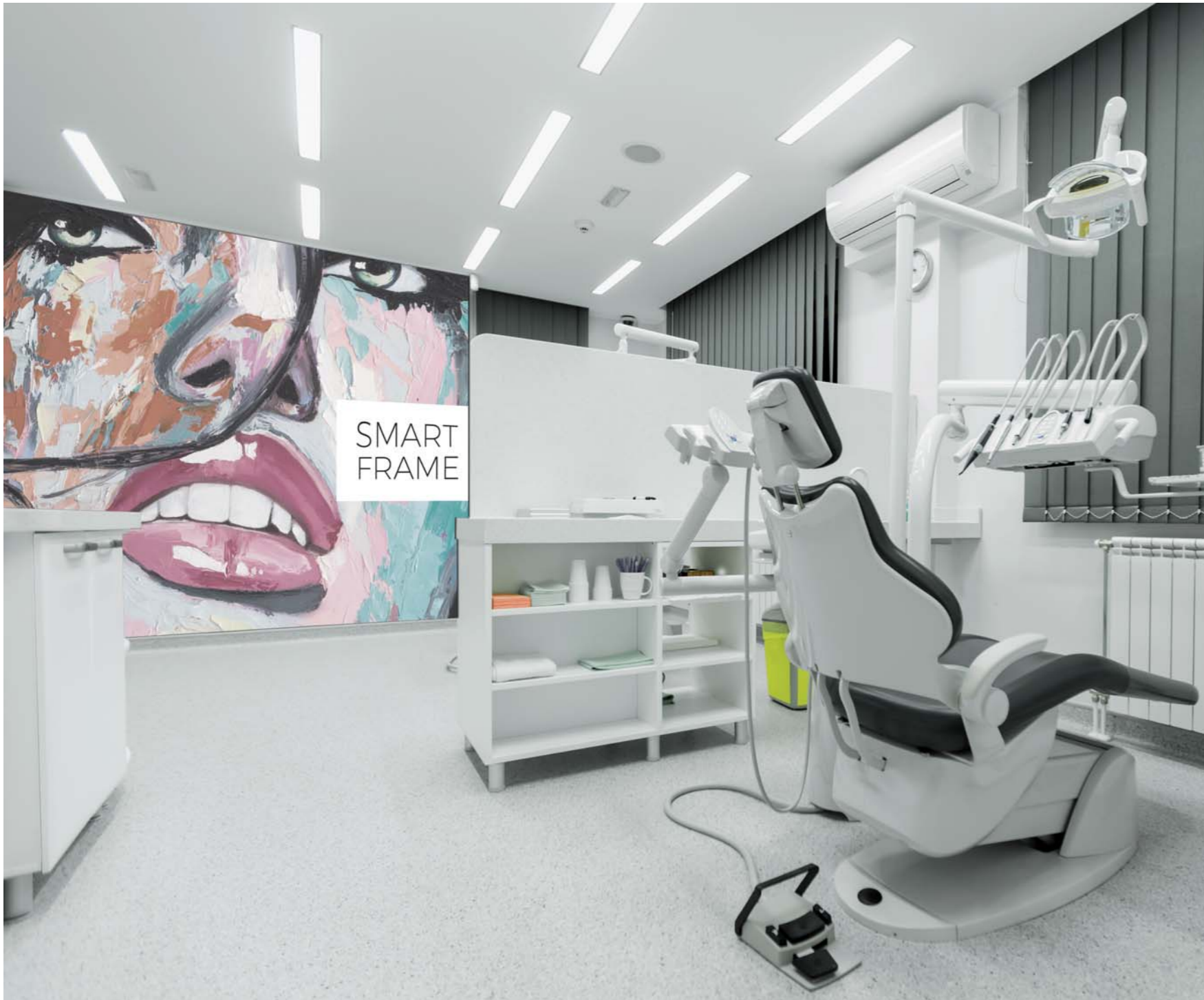


# SMART FRAME

## STANDARD PROFILES







# Smart Frame

Get to know the system of fabric stretched on frames

Smart Frame is a system based on light aluminium frames with prints on flexible fabric.

Designed for versatility and freedom of arrangement, which go hand in hand with high aesthetics and timeless design.

The innovation of the Smart Frame system lies in the surprisingly simple assembly of the graphic onto the frame and the possibility to change the printout at any time.

The edges of the fabric are finished with a silicone elastic band, which is clipped into the frame profile, thus obtaining perfectly tight and exposed graphics.



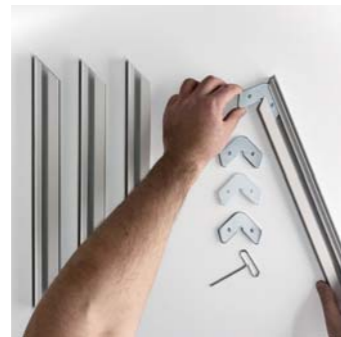
# Assembling the frame

We focused on an intuitive and simple way of assembling the Smart Frame system. In just a few steps you get a finished structure into which you just need to insert your graphics.



1.  
set up the profiles

Arrange the profiles – it will make it easier for you to visualise the finished construction.



2.  
add connectors

In the kit you will find special connectors which need to be placed in the corners of the frame. We have also included an Allen key, which will allow you to easily prepare the construction.



3.  
screw the frame together

Join all the parts together. Make sure that the connectors are tightened securely. This will guarantee the stability of the construction.



4.  
the frame is ready!

It only takes a few minutes to put together a complete frame from the many parts. Simple, isn't it?

# Inserting the fabric

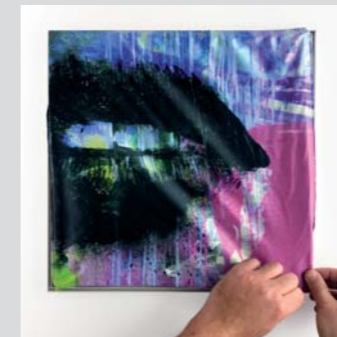
The construction of the frame was designed to make the assembly of the graphics as simple as possible and possible to do it by yourself.

The fabric finished with a silicone elastic band fits perfectly into the profiles and the result is a smooth surface- without creases and unsightly folds.



1.  
lay out the fabric

Lay out the printout on the prepared frame. Make sure the graphic is positioned correctly to avoid being pinned upside down.



2.  
fasten the corners

Always start pinning from the corners. This is where the greatest stresses occur. This will make your work easier.



3.  
fasten in place

Start fitting the edges from the centre of the profile and continue along the frame towards the corners. Repeat this process for each side.



4.  
the frame is ready!

Your Smart Frame is ready! Now you can enjoy perfectly stretched graphics on a stable frame.



Easy assembly



Removable corner



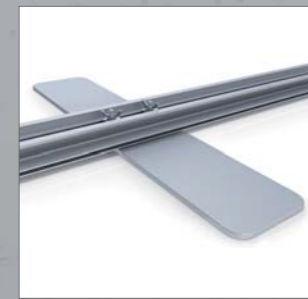
Power supply



LED



Reinforcement profiles



Base for free-standing display



# S18

A profile with a depth of 18mm

This profile is designed mainly for wall frames, although in small sizes it can also be suspended on wires or a line.

In case of larger formats it is recommended to fix the frames directly to the wall. S18 allows the creation of decorative images and large format walls. Dedicated to interior use.

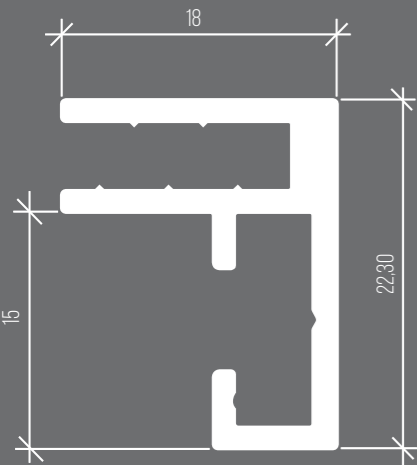


# S18

**frame type:** single-sided  
**graphic:** one-sided  
**backlighting:** not available  
**use:** wall mounted (BDS, M1), hanging (ZL - small size)

**depth:** 18 mm  
**weight/metre:** 0.288 kg  
**standard colour:** silver, black, white  
**optional colour:** any RAL colour

**fixing:** directly to the wall BDS, wall M1  
**connector:** corner FC1, straight L1  
**stabilizer:** no  
**groove for mounting accessories:** no



FC1 - corner connector



FC1 - corner connector



L1 - straight connector



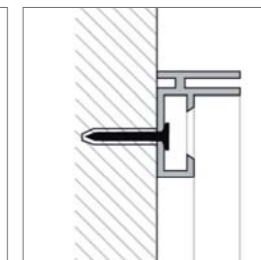
L1 - straight connector



M1 - wall fixing



M1 - wall fixing



BDS - direct wall mounting

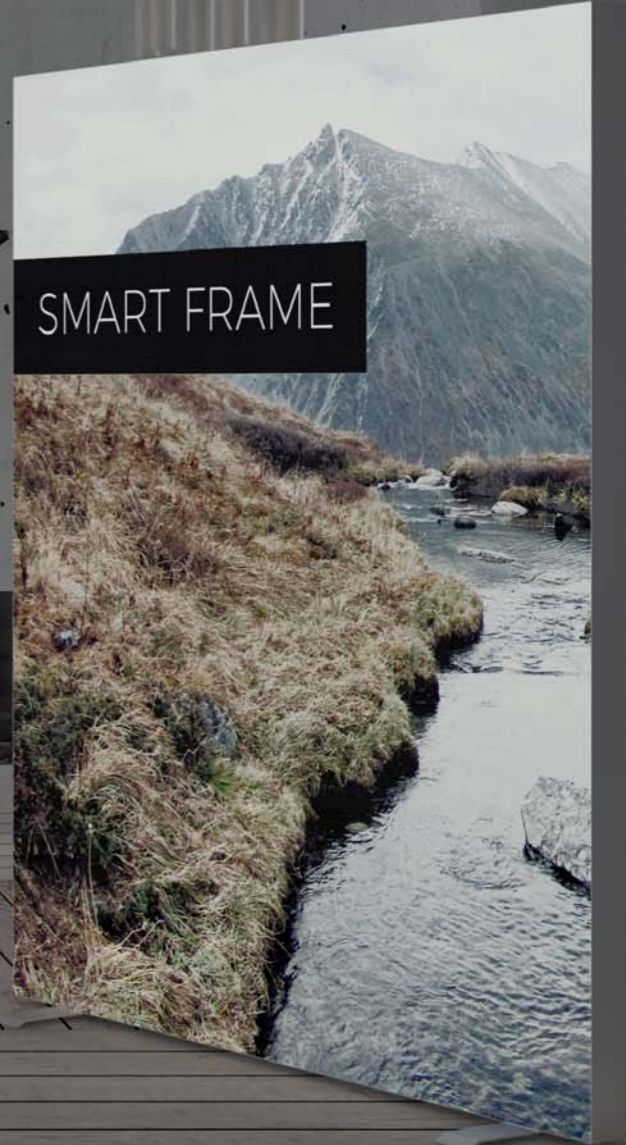


BDS - direct wall mounting

SMART FRAME



SMART FRAME

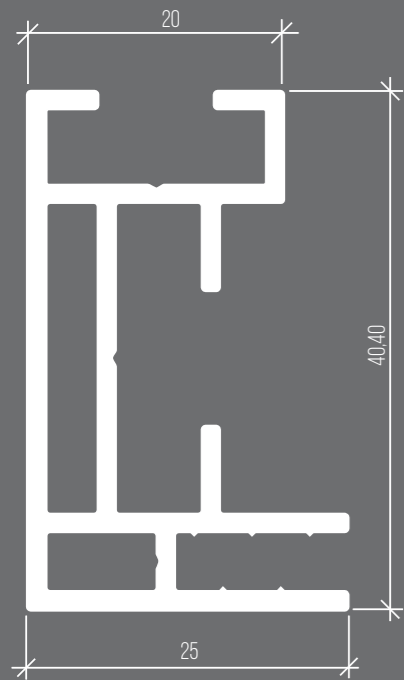


# S25

Reinforced profile with a 25mm depth

A profile designed mainly for constructing robust wall frames - hung or mounted directly to the wall. Reinforced profile, in connection with proper stabilizers, allows to realize even large format pictures. Dedicated to indoor and outdoor purposes.





# S25

**frame type:** single-sided  
**graphic:** one-sided  
**backlighting:** not available  
**use:** wall mounted (BDS, M2), suspended (ZL)  
**optional:** acoustic filling

**depth:** 25 mm  
**weight/metre:** 0.636 kg  
**standard colour:** silver, black, white  
**optional colour:** any RAL colour

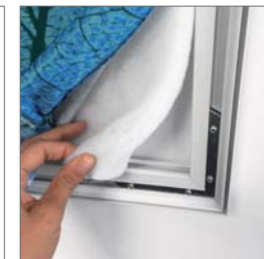
**fixing:** directly to the wall BDS, wall M2, suspension ZL  
**connector:** corner FC2, straight L2  
**stabilizer:** yes  
**groove for mounting accessories:** no



L2 - straight connector



L2 - straight connector



WA - acoustic filling



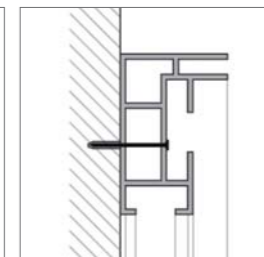
ST - stabilizer



FC2 - corner connector



ZL - suspension fitting



BDS - direct wall mounting



M2 - wall fixing

# S50D

Double-sided profile with a depth of 50 mm

A profile designed for constructing double-sided free-standing or suspended frames, which are perfect as walls or double-sided pictures. Stabilizers can be fixed in it, thanks to which it is possible to create larger frames. The profile has a groove, which makes it easier to install accessories to the frame. Dedicated to indoor use.

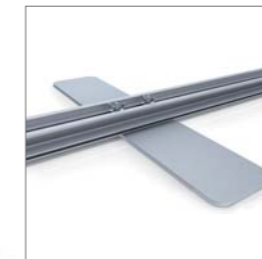
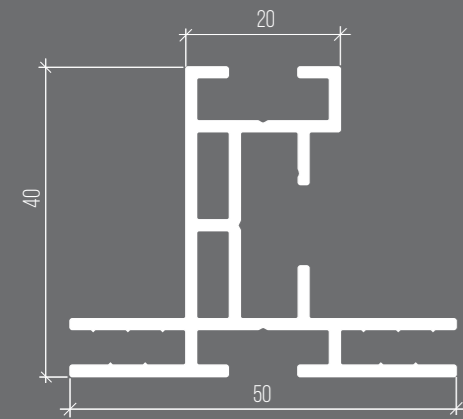
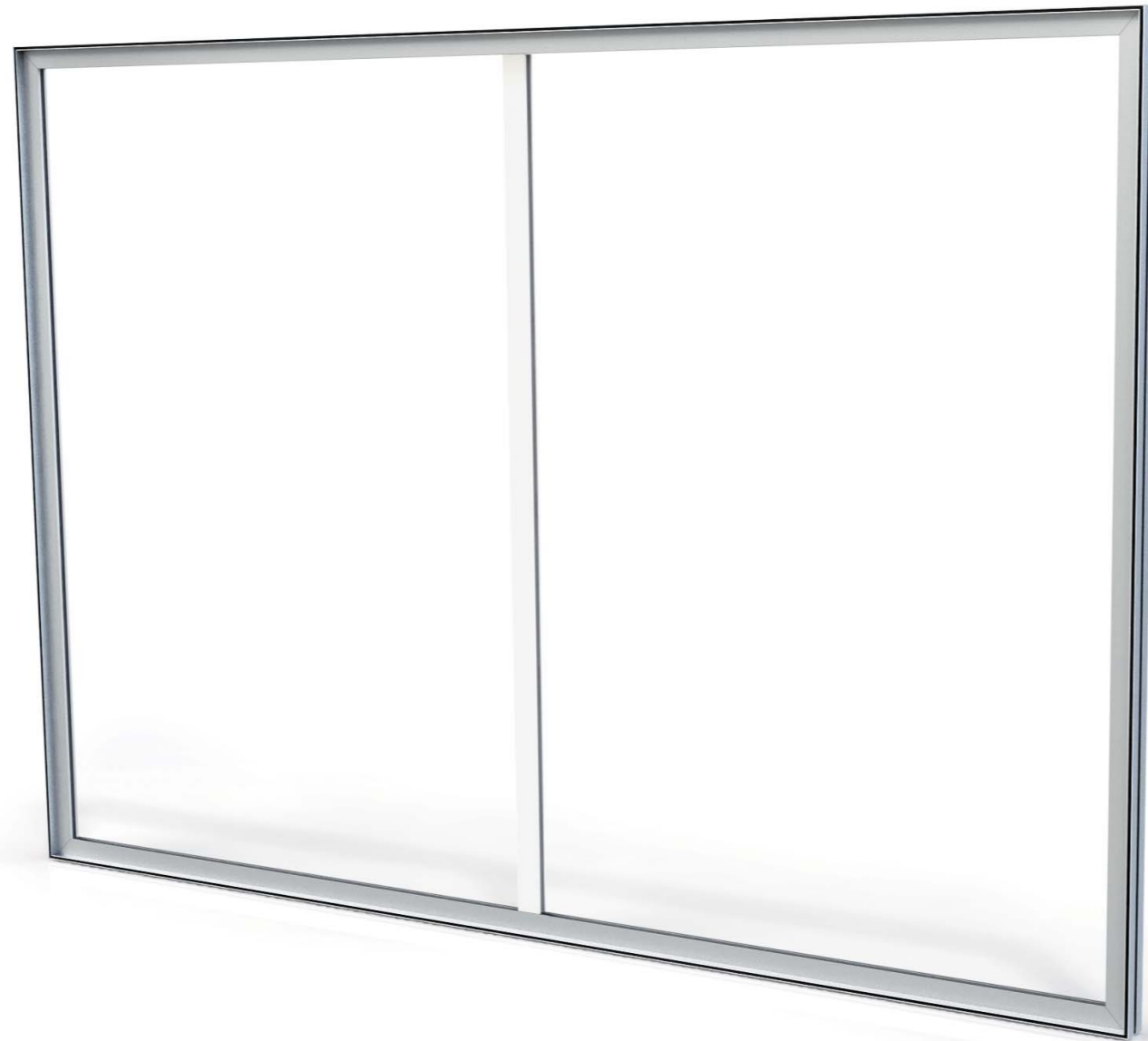


# S50D

**frame type:** double-sided  
**graphic:** one-sided or double-sided  
**backlighting:** not available  
**use:** free-standing (feet), suspended (ZL)  
**optional:** acoustic filling

**depth:** 50 mm  
**weight/metre:** 0.8 kg  
**standard colour:** silver, black, white  
**optional colour:** any RAL colour

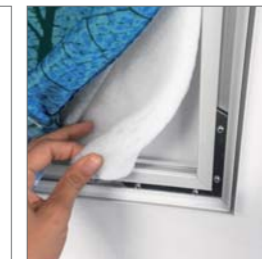
**fixing:** ZL suspensions, feet  
**connector:** corner FC2, straight L2  
**stabilizer:** yes  
**groove for mounting accessories:** yes  
**optional accessories:** external LED lamps, TV mounts



SD - foot



L2 - straight connector



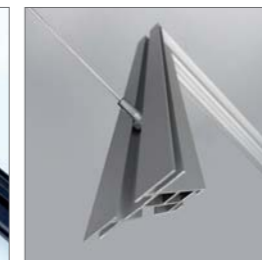
WA - acoustic filling



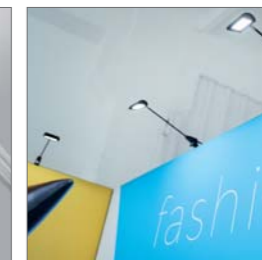
ST - stabilizer



FC2 - corner connector



ZL - suspension fitting



LAMP-LED - external lamps



MTV - TV mounting bracket

# S50T

Profile with a depth of 50 mm dedicated to backlighting

It is designed to construct thin lightboxes which are usually fixed directly to the wall. S50T profile allows also for creation of double sided frames suspended on a line. The fabric attached to the back of the frame allows the dibond composite panel to be aesthetically covered. S50T is ideal for illuminated images, including large format frames. Dedicated to indoor applications.





# S50T

**frame type:** single-sided LED  
**graphics:** one-side illuminated  
(other side not illuminated)

**backlighting:** rear

**use:** wall mounted (BDS), suspended (ZL)

**depth:** 50 mm

**weight/metre:** 0.938 kg

**standard colour:** silver, black, white

**optional colour:** any RAL colour

**fitting:** directly on the wall BDS, suspended ZL

**connector:** corner FC2, straight L2

**stabilizer:** no

**groove for mounting accessories:** no



FC2 - corner connector



FC2 - corner connector



Backlight ST - backlight



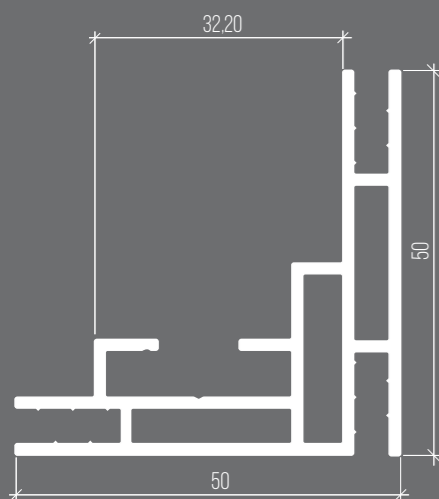
L2 - straight connector



ZL - suspension fitting



BDS - direct wall attachment





SMART FRAME

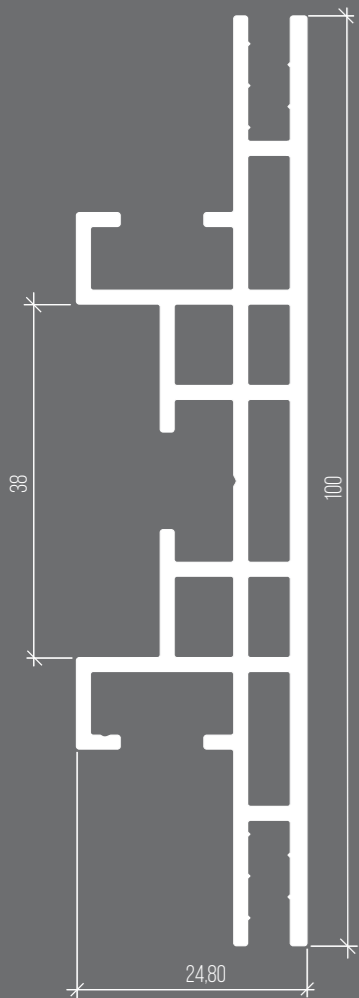
# S100

Double sided profile with 100mm depth and wide range of applications

A popular profile for lightboxes, illuminated pictures, free-standing walls and exhibition stands. Therefore, it is perfect as a standing, hanging or suspended frame. Mounting the stabilisers allows you to make any format of the frame, while guaranteeing the stability of the entire structure. LED edge lighting is available in three types. Dedicated to indoor and outdoor applications.

**\*Notes:** External use only possible for small frame sizes.



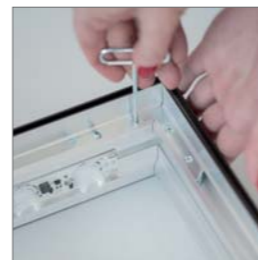


# S100

**frame type:** double-sided, double-sided LED  
**graphics:** single-sided or double-sided  
**backlighting:** side with Standard LED, Super LED or Outdoor LED modules  
**use:** wall-mounted (M3), suspended (ZL), free-standing (feet)

**depth:** 100 mm  
**weight/metre:** 1,425 kg  
**standard colour:** silver, black, white  
**colour option:** any RAL colour

**fixing:** wall M3, suspension ZL, feet  
**connector:** corner FC3 (2 pcs per corner), straight L3  
**stabilizer:** yes  
**groove for mounting accessories:** no  
**optional accessories:** TV mounts



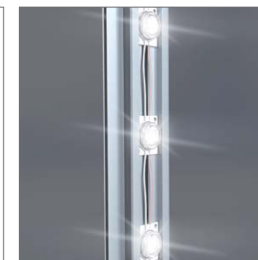
FC3 corner connector



SD - foot



SB - foot



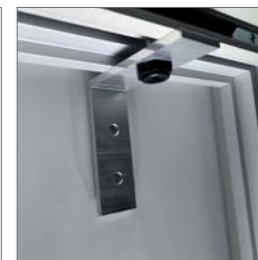
Edge light Standard LED



L3 - straight connector



ZL - suspension mount



M3 - wall fixing



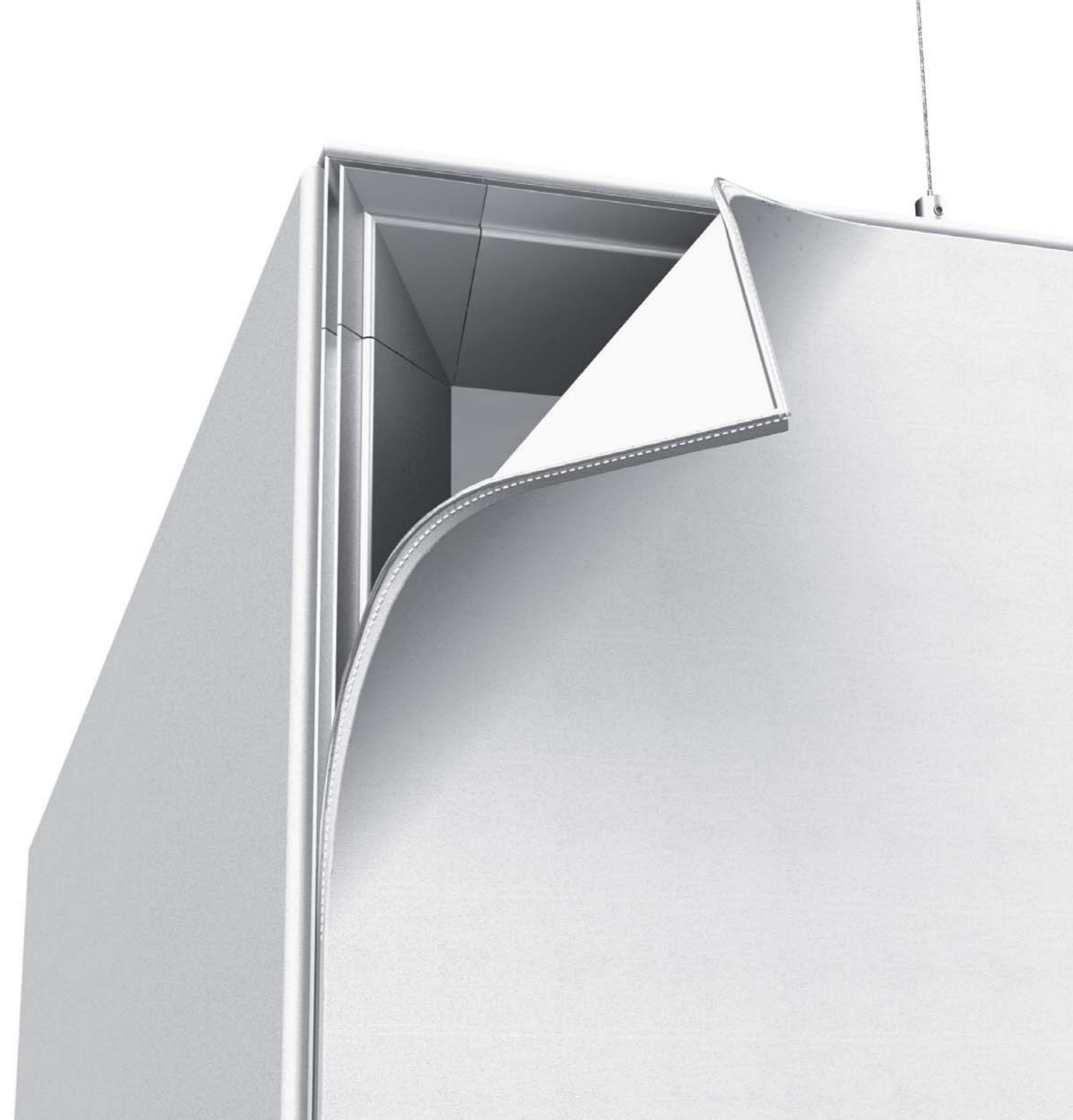
MTV - TV mounting bracket

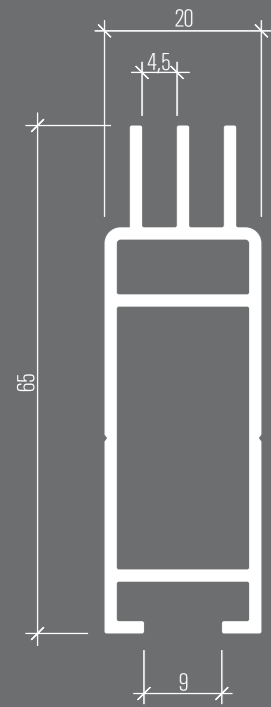
# FBox

## Profile for building spatial forms

Designed for construction of suspended cubic forms. For larger structures the use of stabilisers is recommended. Textile graphics can be mounted on six sides - the joints are in the corners, without visible gaps, which guarantees a high aesthetic finish. Backlighting using spherical LED bulbs.\*

**\*Notes:** Uniform light dispersion can only be achieved in constructions not exceeding 2x2x2 m. In the case of larger structures, it is necessary to use stabilisers, which may slightly stand out when illuminated.





# FBox

**frame type:** spatial frame  
**graphics:** one-sided  
**backlight:** LED spherical bulbs  
**use:** suspended (ZL)

**depth:** 65 mm  
**weight/metre:** 0.88 kg  
**standard colour:** silver  
**optional colour:** any RAL colour

**fitting:** hanging ZL  
**connector:** corner FCBox, straight LBox  
**stabilizer:** yes  
**groove for mounting accessories:** yes



FS BOX stabilizer



LBox straight connector



FBox LED - spherical bulb



ZL - suspension mount



FCBox - corner connector



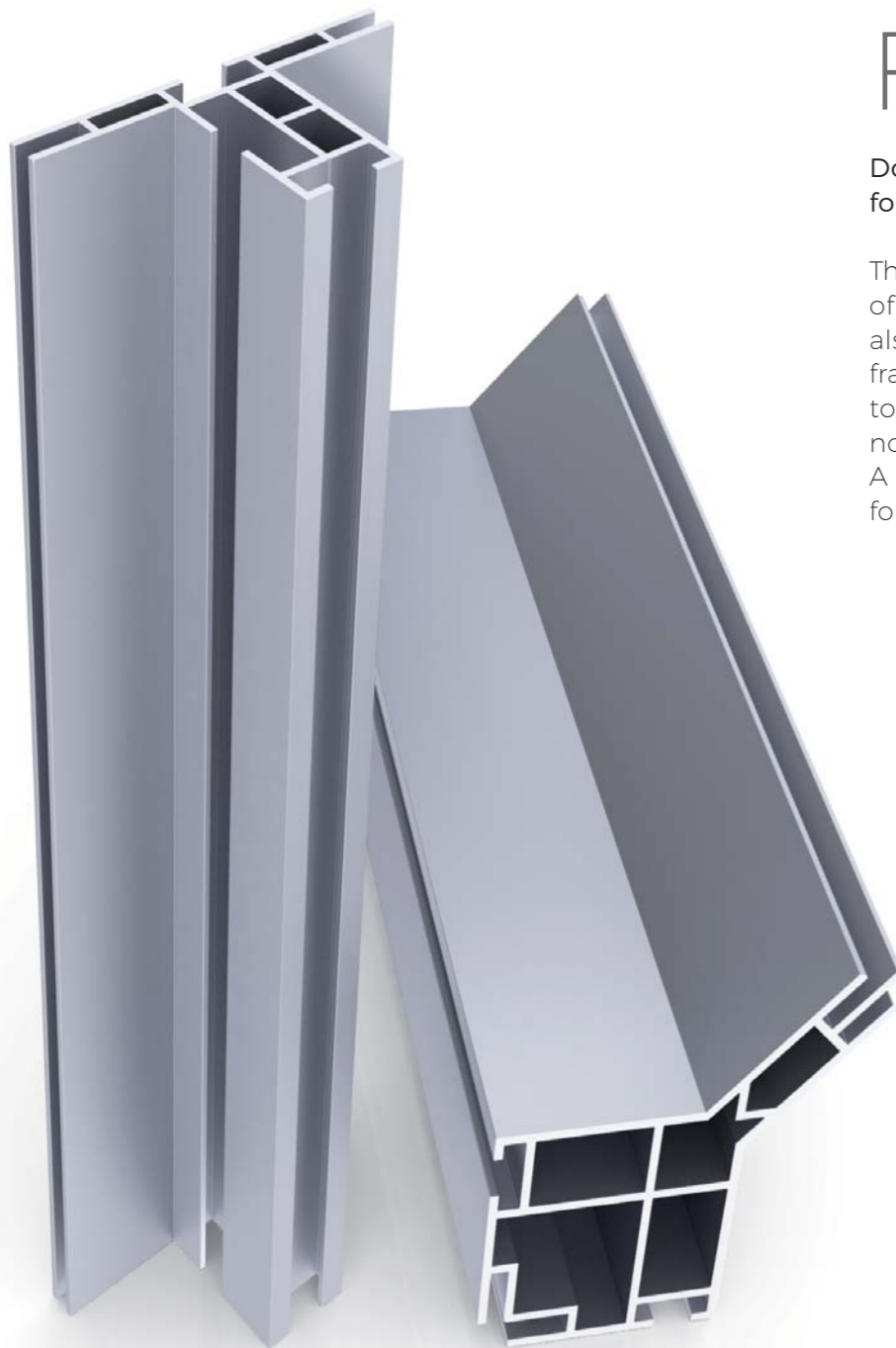
FCBox - corner connector

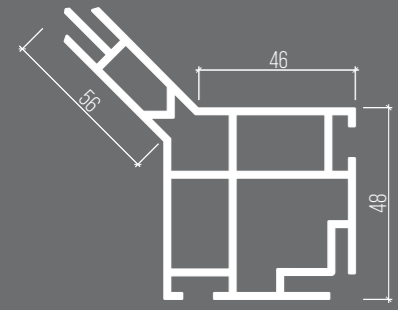
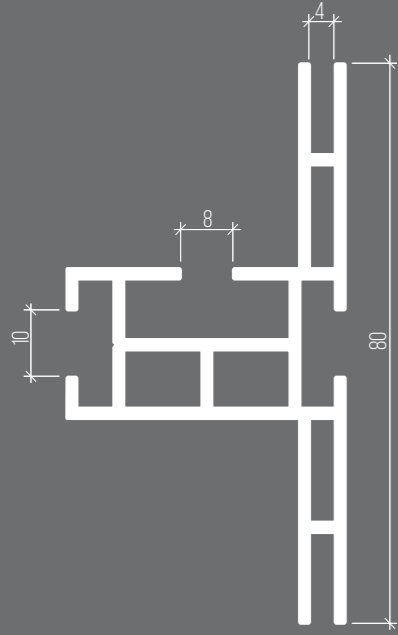
# F80

Double-sided profile with a depth of 80 mm for the construction of frames and spatial forms

This robust profile is designed for the construction of four-sided, mainly suspended frames. F80 can also be used as a free-standing or suspended frame. The stretched graphic is joined at the edges to provide an aesthetically pleasing finish with no visible gaps.

A special F80 corner post is dedicated for corner connections.





# F80

**frame type:** double-sided  
**graphics:** one-sided or double-sided  
**backlighting:** not available  
**use:** suspended, free-standing

**depth:** 80 mm  
**weight/metre:** 1.33 kg  
**post:** 2.2 kg  
**standard colour:** silver  
**optional colour:** any RAL colour

**fixing:** ZL suspensions, feet  
**connector:** corner FC2, straight L2, connector F80 F80C-FC80  
**stabilizer:** yes  
**groove for mounting accessories:** yes



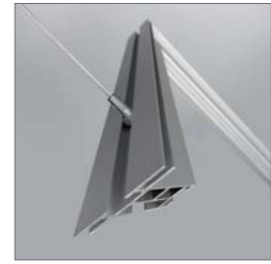
ST stabilizer



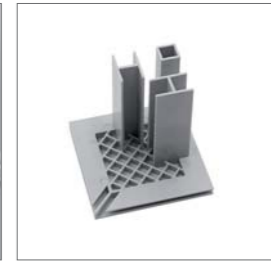
L2 - straight connector



SD - foot



ZL - suspension fitting



80C-FC80 corner connector



80C-FC80 corner connector



SMART FRAME



# F120

Profile with a depth of 120 mm  
for construction of frames with backlight

It is designed to build frames with side  
or rear mounted backlight on stabilizers.  
Profile is double sided, illumination is available  
only from one side.  
Recommended especially for building large  
lightboxes with external use - with edge-lit  
Outdoor LED modules.

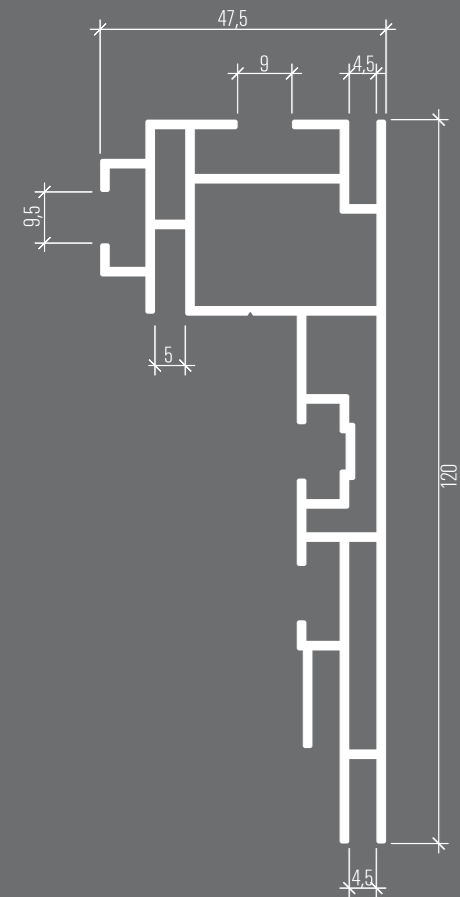
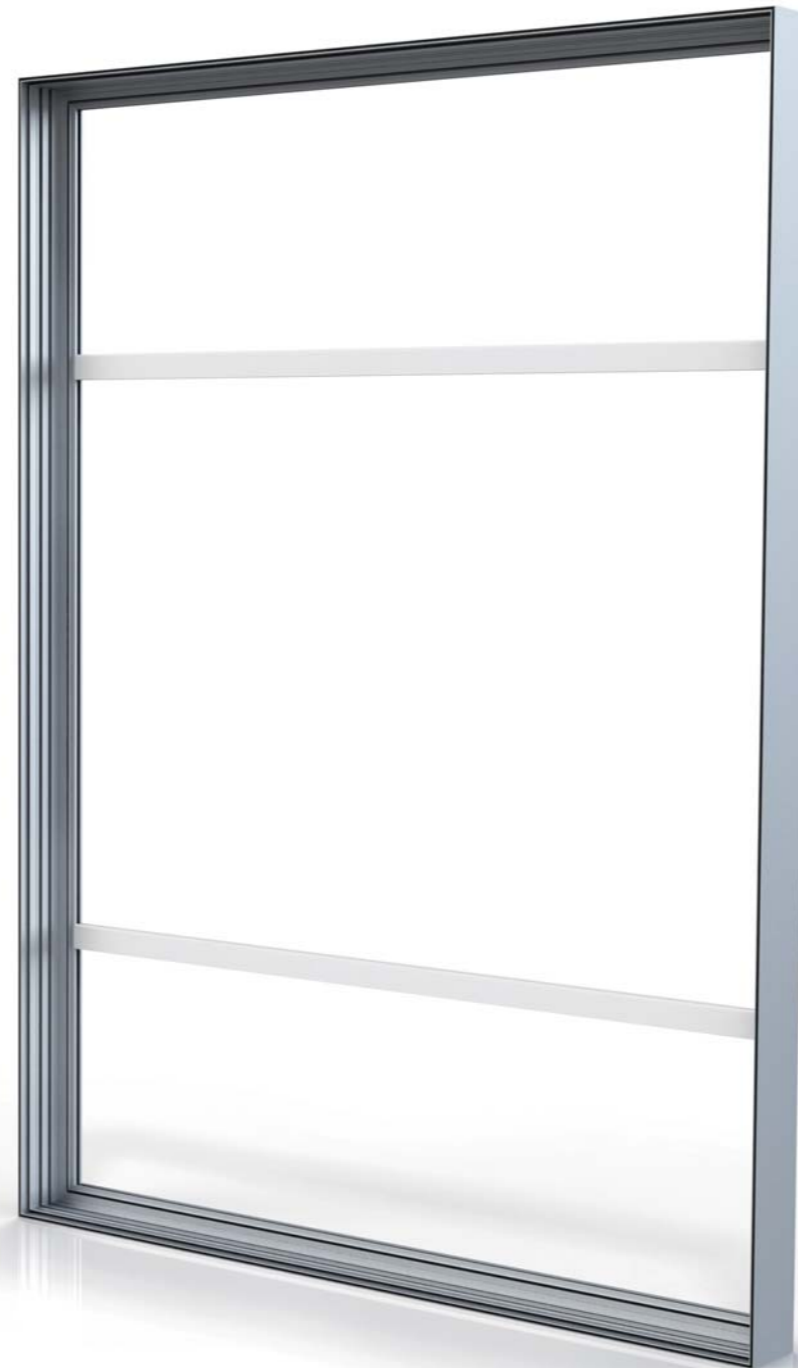


# F120

**frame type:** double-sided  
**graphics:** one-side illuminated (other side not illuminated)  
**backlighting:** edge or rear on stabilisers, outdoor LED modules (for outdoor applications), Standard LED and Super LED (for indoor applications)  
**use:** wall-mounted (M4), suspended (ZL), free-standing (feet).

**depth:** 120 mm  
**weight/metre:** 2,221 kg  
**standard colour:** silver  
**optional colour:** any RAL colour

**fixing:** wall M4, hanging ZL, feet  
**connector:** corner FC2 + FC120, straight L2  
**stabilizer:** yes  
**groove for mounting accessories:** no



FC120 corner connector



FC2 corner connector



L2 - straight connector



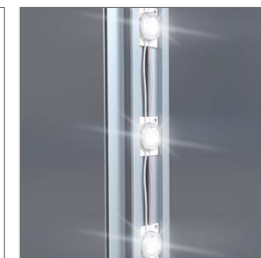
SD - foot



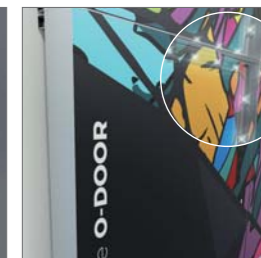
ST - stabilizer



ZL - suspension fitting



Edge light Standard LED



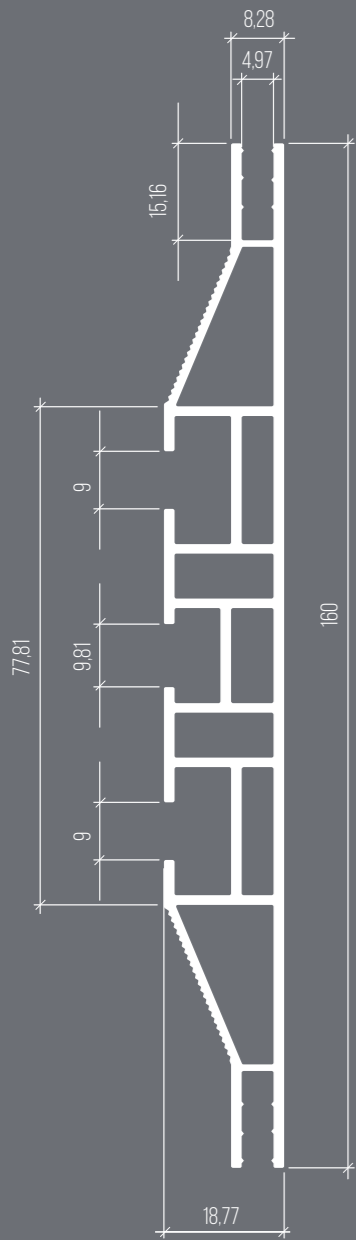
LED Outdoor backlight

# F160

Profile with a depth of 160 mm  
for the construction of large frames with lighting

Dedicated to build suspensions with backlight and illuminated large frames. There is a possibility of double sided backlighting - with LED module mounting modules on stabilisers. FC160C corner profile allows you to insert the fabric with graphics in an aesthetic way without any visible gap.





# F160

**frame type** double-sided, double-sided LED  
**graphics:** single-sided or double-sided  
**backlighting:** single-sided or double-sided, edge (Standard LED, Super LED)  
**use:** suspended (ZL), free-standing (feet)

**depth:** 160 mm  
**weight/metre:** 2 kg  
**standard colour:** silver, black  
**optional colour:** any RAL colour

**fixing:** suspension ZL, feet  
**connector:** corner FC160, straight L160  
**stabilizer:** yes  
**groove for mounting accessories:** no



FC160 corner connector



FC160 corner connector



L160 straight connector



L160 straight connector



SD - foot



ST - stabilizer



ZL suspension fitting



Super LED edge illumination





**Graphique Media Solutions Ltd**

Units 8-9 Victoria Trading Estate, Roche, Cornwall PL26 8LX

☎ 01726 893129 | ✉ [robin@gms.uk.com](mailto:robin@gms.uk.com) | 🌐 [gms.uk.com](http://gms.uk.com)